

PEOPLE REALLY

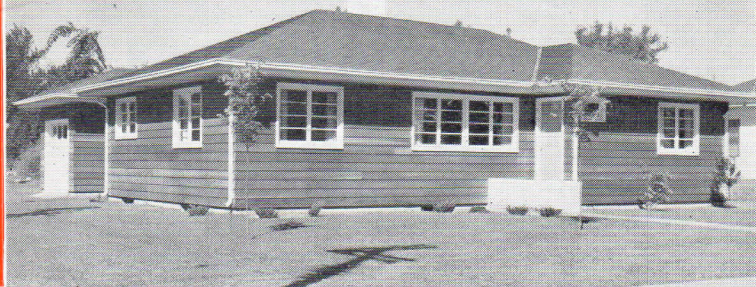
Live

IN **BAYPORT**



Bayport, Minnesota, a town of homes and churches and schools and playgrounds and thriving businesses, located in the "Friendly Valley" of the St. Croix River on the border between Minnesota and Wisconsin.

On the west bank of the beautiful St. Croix, looking across broad St. Croix Lake, lies the town of Bayport. Within a few miles of the Twin Cities, Minneapolis and St. Paul, this community nestles in a friendly valley that has seen the boom days of last century's lumber cutting and has emerged in this century as a thriving business and manufacturing center interwoven with peaceful, happy, home and family life. Bayport is a community of homes and of home-loving citizens where people really live.



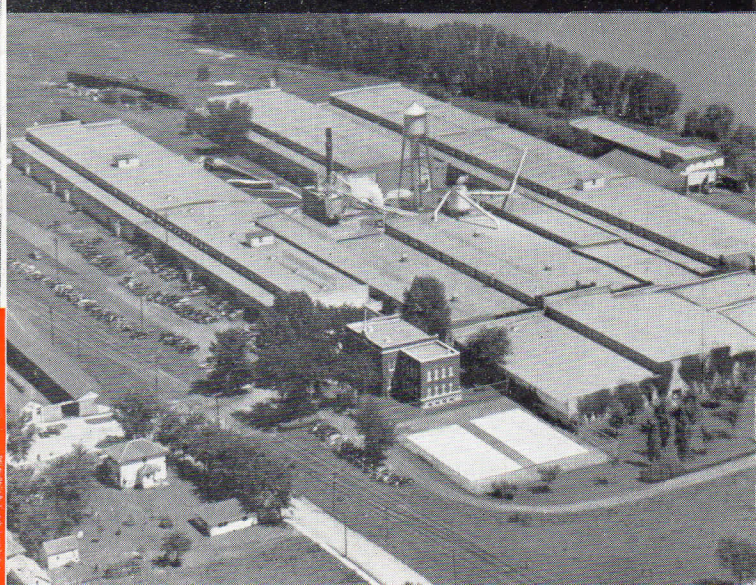
PEOPLE REALLY LIVE IN BAYPORT. Throughout all twelve months of the year there are unequalled opportunities for outdoor recreation.

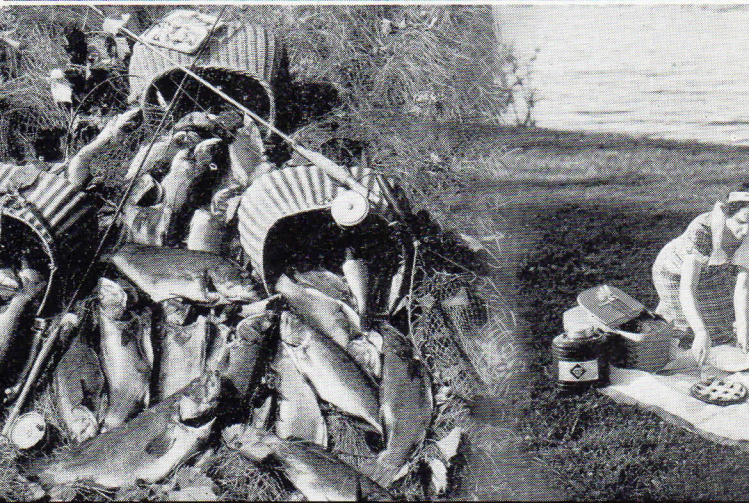
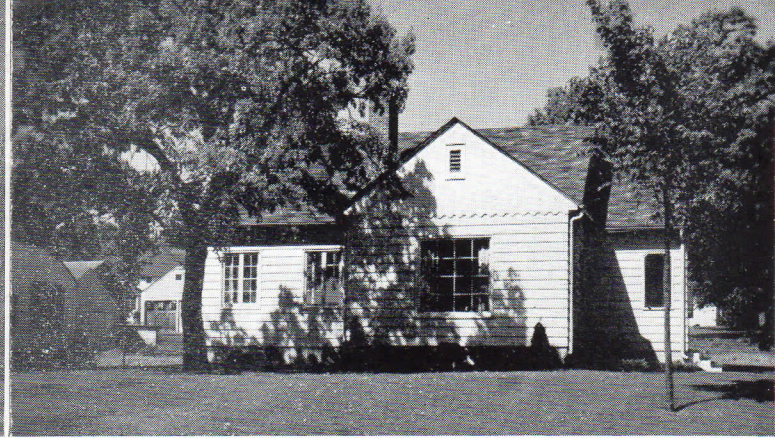
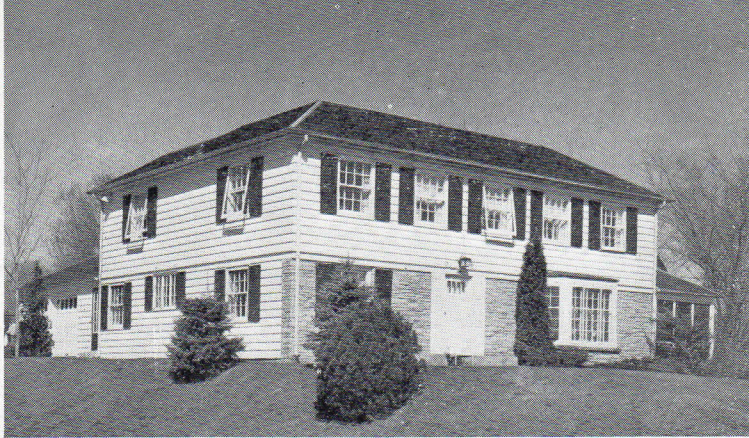
A bathing beach lies within the town limits with a lifeguard and caretaker on duty. Lakeside Park, adjoining the beach, provides a fine picnic and recreation ground. Other picnic and outing spots are within a few minutes' drive.

White Pine Inn is one of Bayport's principal attractions. This lovely hotel and restaurant draws thousands of guests each year to its log cabin dining room.

Bayport is a church town. Religious life plays an important part in the community's activities. The following churches all with resident pastors are located in Bayport: Bethlehem Lutheran, Peoples Congregational, St. Charles Catholic. Other denominations are less than three miles away in nearby Stillwater.

Bayport takes justifiable pride in its modern school which offers Elementary and Junior High training. High school pupils go to Stillwater's excellent Senior High School.



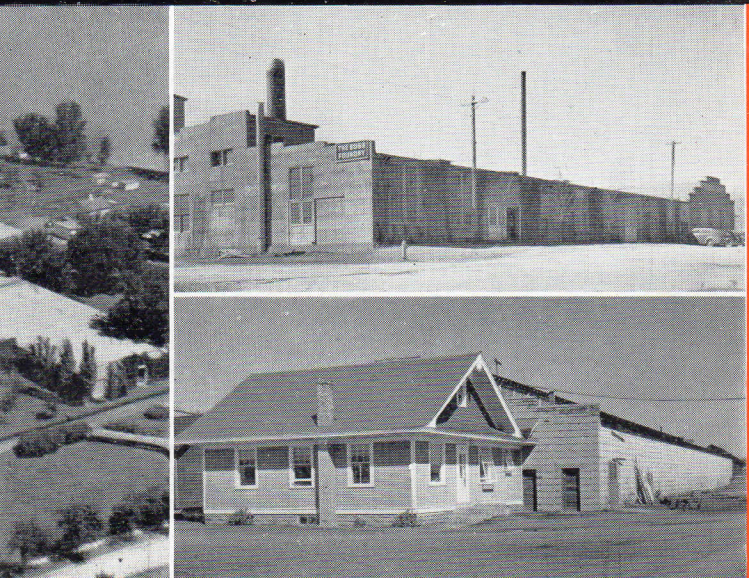


The St. Croix is unexcelled for boating, canoeing and other aquatic sports. North of Bayport are the scenic dalles and gorges, wonder spot of Minnesota and Wisconsin. Bass, pike and crappie fishing is good in the St. Croix, and its nearby tributaries, the Kinnickinnic and the Willow, are well known trout streams.

The village maintains a municipal playground for children, and there are

also excellent tennis courts and a ball park. A beautiful golf course is only ten minutes away.

The towering bluffs and hills that enclose the "Friendly Valley" make this region a mecca for winter sports fans. One of the finest ski tows in the state is almost within the village limits. The playground is flooded in winter for skating.



Bayport's manufacturing plants provide a stable source of income to a large number of citizens.

The largest plant is that of the Andersen Corporation (shown at left), nationally known manufacturers of complete wood window units and window frames. The Andersen plant, located on the shores of Lake St. Croix, is the largest in the world devoted exclusively to the making of wood windows.

Other industries, employing several hundred persons, are the Boss Foundry (upper right), makers of gray iron castings; St. Croix Manufacturing Company (lower right), makers of furniture and furniture frame work; the Bayport Wood Products Company, the Ideal Brass Foundry and the Minnesota State Prison Industries. Another important activity is the annual ice harvest by Bayport Ice Company and St. Croix Lake Ice Company.

Three major railroads serve Bayport and the surrounding area: the Northern Pacific, the Milwaukee, and the Northwestern. Connections with trucking lines into the Twin Cities and to Milwaukee and Chicago and eastern points are also excellent. See small insert map.

36 212 64 35
MINN. WIS.

DEER AND
DUCK HUNTING 50 MILES
10,000 LAKES REGION
WITHIN HALF HOUR DRIVE



HIGHWAY TO SAINT PAUL
VIA 212

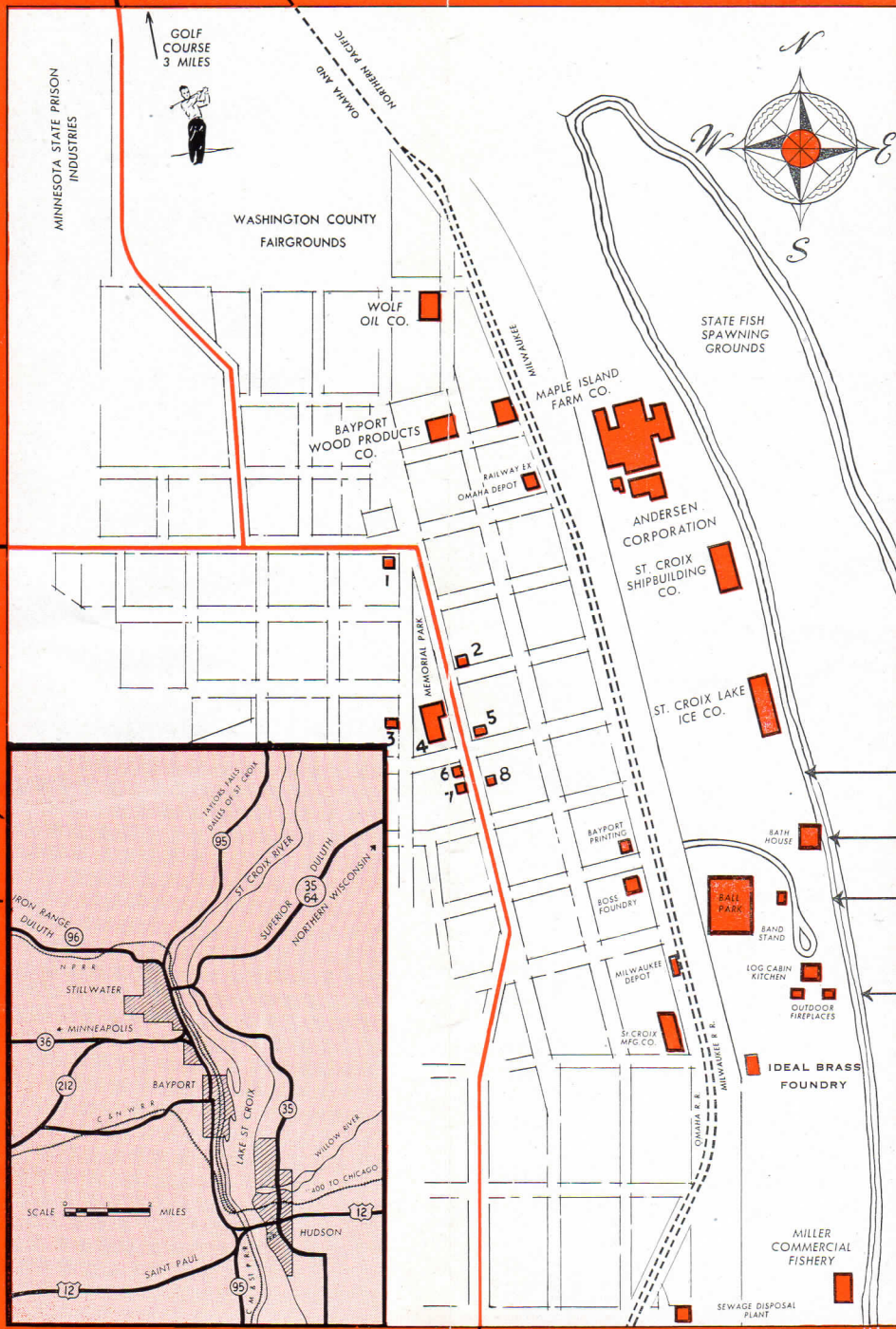
TO SKI TOW



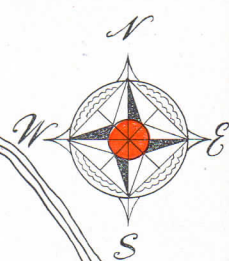
SKI TOW



MAIN PHEASANT HUNTING
TERRITORY 85 MILES



TAYLORS FALLS 34 MILES
ARROWHEAD COUNTRY 180 MILES
WISCONSIN VACATION COUNTRY
FROST STREAMS 45 MILES
HAWKAGONG AND BRULE



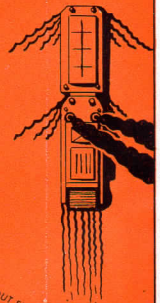
LAKE ST. CROIX

BOAT LIVERY

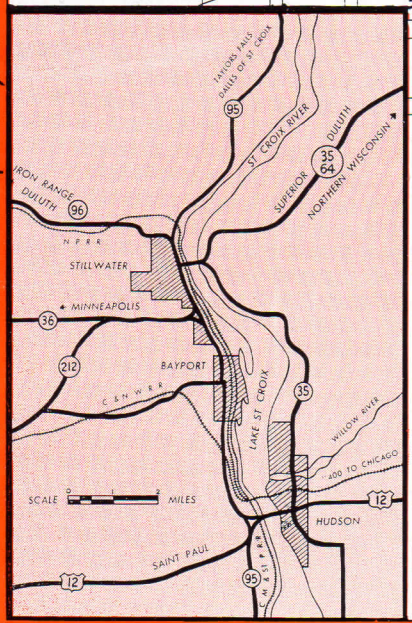
BATHING BEACH

LAKESIDE PARK AND
PICNIC GROUND

BOAT LIVERY



FROST FISHING
5 MILES
WILLOW AND KINNICKINNIC



SCALE 0 1 2 MILES

- 1 WHITE PINE INN
- 5 PEOPLES CONGREGATIONAL CHURCH
- 2 ST. CHARLES CATHOLIC CHURCH
- 6 VILLAGE HALL
- 3 BEFHLEHEM LUTHERAN CHURCH
- 7 POST OFFICE
- 4 SCHOOL
- 8 AMERICAN LEGION CLUB HOUSE

95
12

CROCUS PARK
PICNIC AND RECREATION GROUNDS

BAYPORT

NEAR THE CLEAR, COOL LAKES OF MINNESOTA AND WISCONSIN

Bayport is strategically located within easy driving distance of the famous trout streams and thousands of lakes of northern Minnesota and Wisconsin. Within a few minutes or a few hours the fisherman and sportsman . . . or the vacationist . . . can be at any of hundreds of delightful spots. Broad highways open up in every direction from Bayport to this vacation paradise.

Bayport's location within a few minutes' driving or bus time of both Minneapolis and St. Paul brings the cultural, entertainment, business and educational advantages of these two large cities to within easy reach of Bayport residents.

Bayport still has plenty of desirable home building sites and offers home owners the advantages of paved streets, municipal light and power, gas for cooking, sewer system with modern disposal plant, pure deep well water supply, automatic telephone system and excellent fire protection. There is also a resident physician and a dentist, and modern hospital facilities are available in nearby Stillwater.



For further information regarding home sites and business opportunities, write to Secretary, Bayport Improvement Club, Bayport, Minnesota.

